



# Urban Analytics

*Good Data. Better Decisions.*

# 1 and 2. Mobility & Security

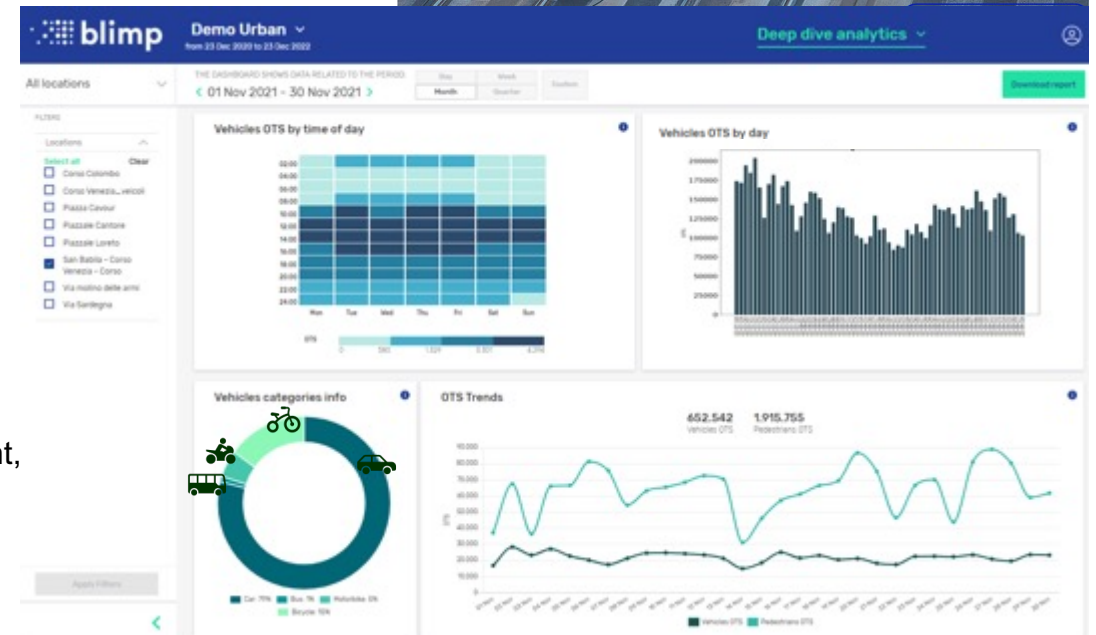
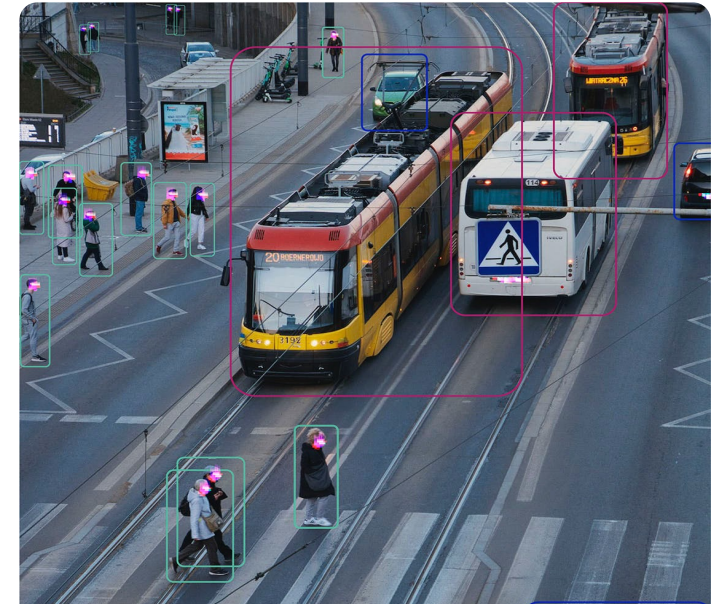
## Traffic analysis

### Description:

Real-time analysis of **vehicle** traffic entering and leaving cities, at major road junctions, or in particular designated areas. The analysis makes it possible to assess traffic peaks, directionality and vehicle type classification.

### Data:

- > Real-time and historical counting of the number of vehicles transited
- > Classification of vehicles (car, motorbike, bicycle, bus, etc.)
- > Hourly traffic matrices
- > Directionality of vehicles
- > Average transit times
- > Congestion index
- > Speed indices
- > Hazard indexes
- > Comparison benchmarks on a temporal or territorial basis
- > Prohibited uses (wrong-way, prohibited parking, motorbikes on the pavement, jaywalking, etc.)



# 1 and 2. Mobility & Security

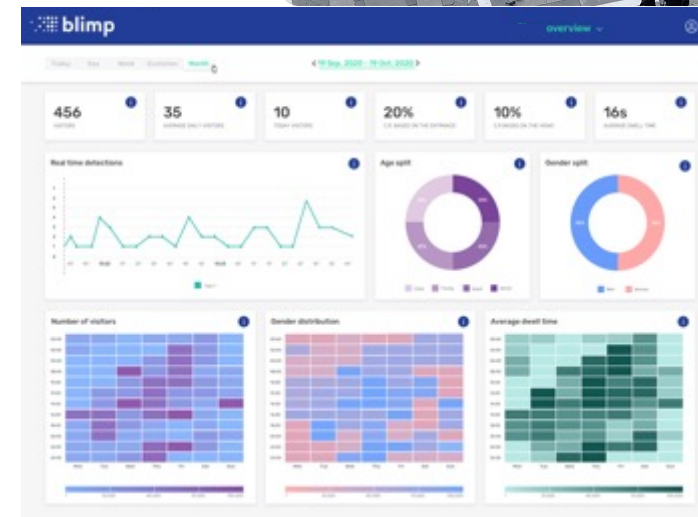
## Affluence in urban environments

### Description:

Real-time analysis of footfall in the city's main urban environments such as the historic centre, parks, stations, pedestrian areas, areas surrounding events. Detection of abnormal situations such as overcrowding. Detection of people or vehicles in prohibited areas.

### Data:

- > Number of pedestrians in monitored areas
- > Socio-demographic classification of pedestrians
- > Average dwell times in monitored areas
- > Directionality of flows
- > Detection of gatherings or abnormal situations
- > Pedestrian hazard index
- > Real-time alerts for public safety
- > Hourly affluence matrices
- > Measurement of tourist influx
- > Temporal or territorial comparison benchmarks



# 1 and 2. Mobility & Security

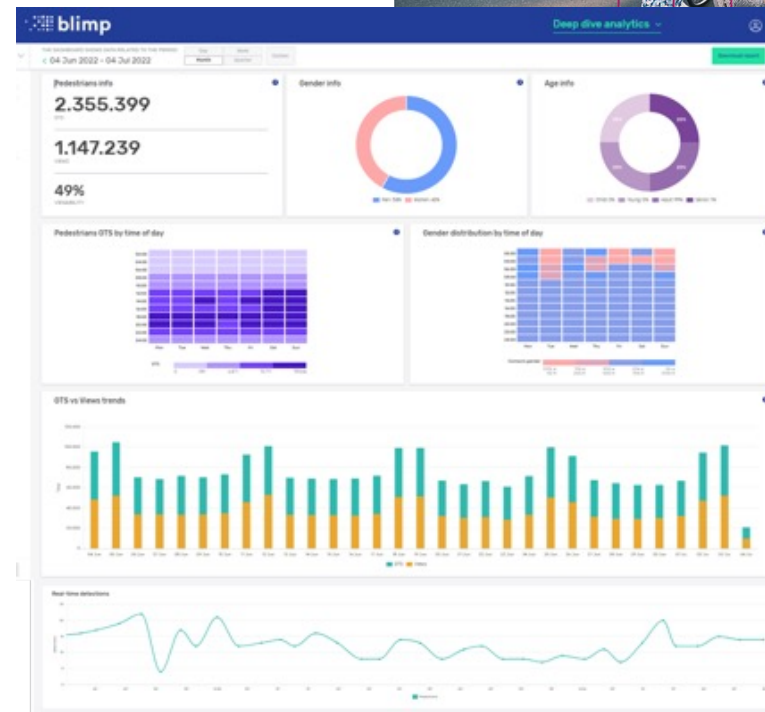
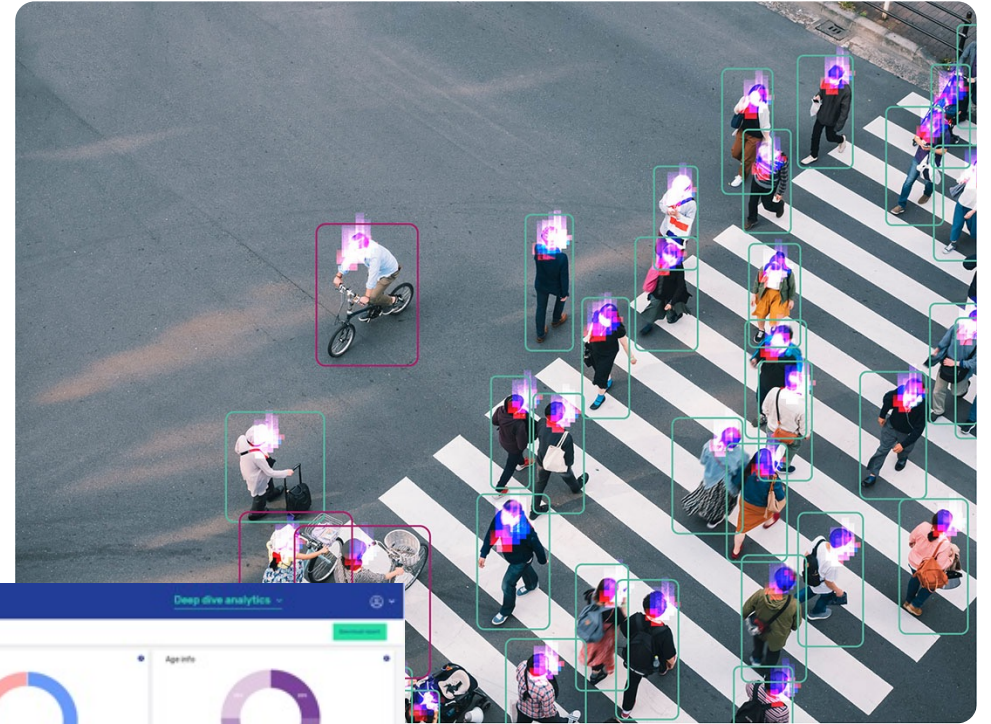
## Analysis of cycle routes

### Description:

Monitoring of cycle lane use with punctual flow analysis and piloting of alerts. Real-time reporting of the passage of unauthorised vehicles (cars, scooters, etc.) or violations.

### Data:

- > Number of passages of bicycles or other light vehicles
- > Directionality of flows of bicycles or other light vehicles
- > Reporting of unauthorised vehicle types
- > Display data of information facilities





**Blimp S.r.l.**  
Via San Martino 12, 20122 - Milan, Italy

E [info@blimp.ai](mailto:info@blimp.ai)  
T 02 45902000  
W [www.blimp.ai](http://www.blimp.ai)